

# BUILDING BRIDGES FOR FAMILIES IN RURAL COMMUNITIES



**HEALTH  
DEPARTMENT**

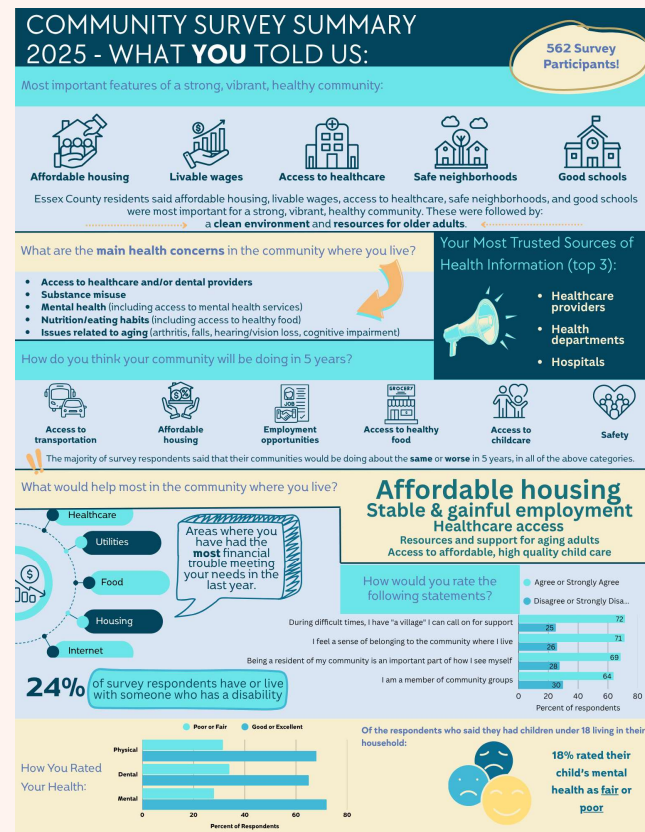
The background features a soft, light pink color with various autumn-themed illustrations. On the left, there are white and green leaves, and a large orange leaf with a black string hanging from it. In the center, there are several pumpkins in shades of teal and green. On the right, there are faint, light pink leaf patterns. Three thin, white circles are scattered across the background: one near the top center, one near the bottom left, and one near the bottom center.

## LEARNING OBJECTIVES:

- ❖ Understand the rural nature of Essex County
- ❖ Describe the role of the Essex County Family Health Programs
- ❖ Describe how collaboration between programs improves outcomes for children and families

# 2025 COMMUNITY HEALTH ASSESSMENT

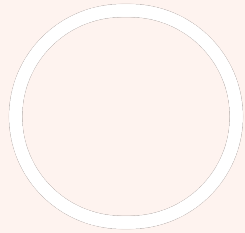
- Who is Essex County?
- Aging Community
- Economic Strain
- Rural Landscape



[Essex County CHA 2025\\_CHIP 2026-2030](#)

# FOUR ROLES:

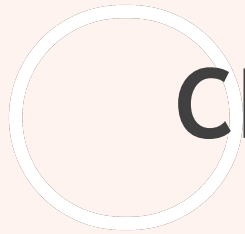
- CYSHCN Coordinator
- Child Find Coordinator
- Child Passenger Safety Technician (CPST + STAC)
  - Certified Lactation Counselor (CLC)



# CYSHCN COORDINATOR

- Focus on developmental support, sensory needs, communication, and connecting with resources as necessary.
- Frequent involvement with early intervention, WIC, therapy teams, and schools.





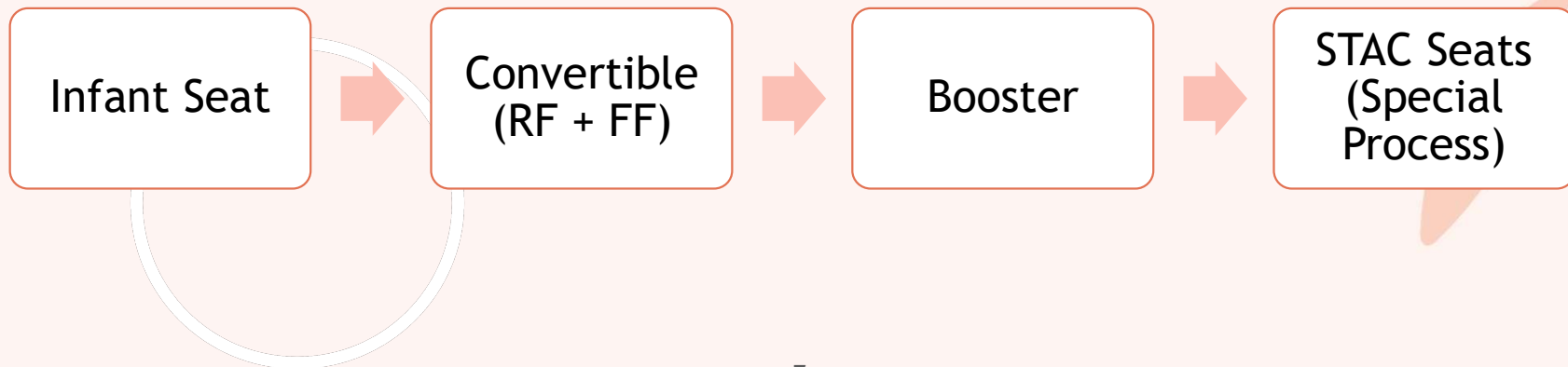
# CHILD FIND COORDINATOR

- Monitoring program for high-risk children.
- Ages and Stages Questionnaires.
- Gives an opportunity to catch delays early on.



# CHILD PASSENGER SAFETY TECHNICIAN

- Ensuring safe transportation for all children, including children who are medically fragile or developmentally diverse.
- Adapt car seats and positioning for unique needs.



# CERTIFIED LACTATION COUNSELOR

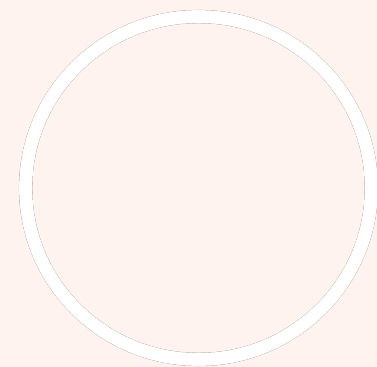
- Baby Steps to Bright Futures Program (August 2023 Launch)
- Supporting feeding- breastfeeding, pumping, supplementation, positioning, and latch.
- Specialized support for infants with medical complexities or developmental differences.
- Collab with pediatricians, nurses, and early-intervention providers.





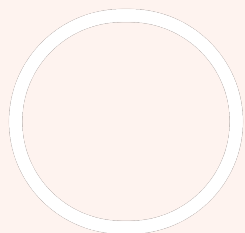
# THE OVERLAP OR “BRIDGE”

- All roles support infants, young children, and caregivers during their most vulnerable periods.
- Parents/Caregivers often face challenges simultaneously and appreciate unified/consistent guidance.
- Being cross-trained allows the ability to spot gaps that need to be filled...creating a “bridge”.



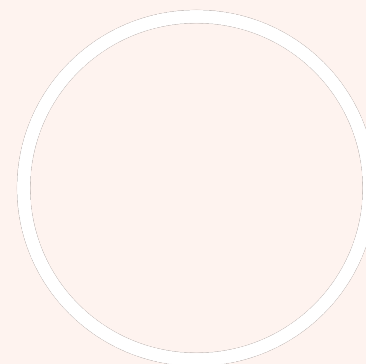
# HOW IS THIS BENEFICIAL?

- Offers streamlined support for families
  - Limits inconsistent messaging
- Working closely with other programs to play a connector role



# IN CONCLUSION

- Weaving between programs allows a seamless streamline between services
- Creating and maintaining a rapport with families
- Goal: to get more family engagement in our CYSHCN program by building the bridges





# THANK YOU

Hillary Drake, MPH, CLC, CPST

[Hillary.drake@essexcountyny.gov](mailto:Hillary.drake@essexcountyny.gov)

518-873-3697