

# The Intersection of Person-Centered Care and Population Health Outcomes

Lauren Johnson, MA, CASAC-M, Putnam County Department of Mental Health

Shanna Siegel, RN, BSN, Putnam County Department of Health

---



**The use of affirming language inspires hope.**

**Language matters.**

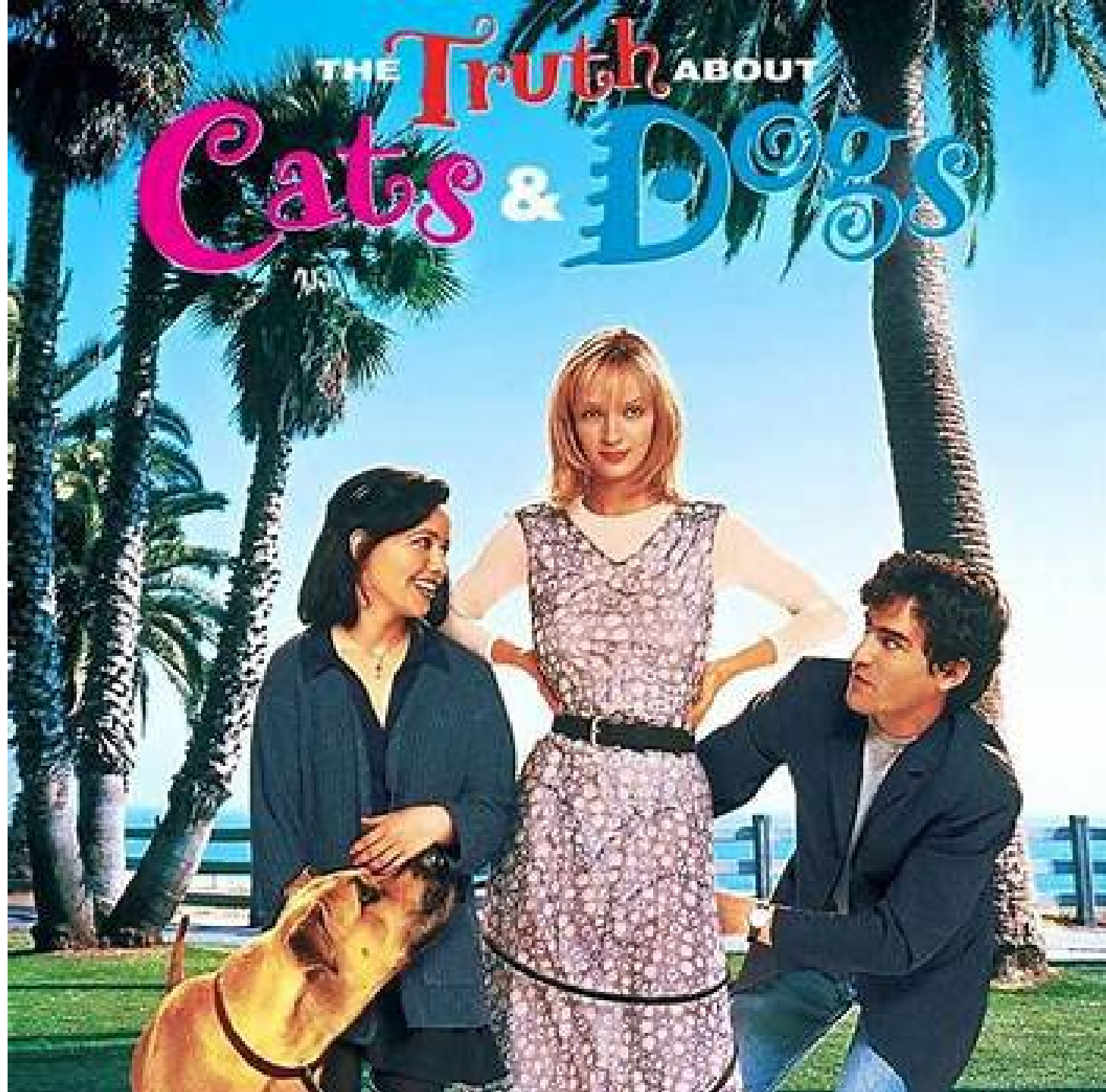
**Words have power.**

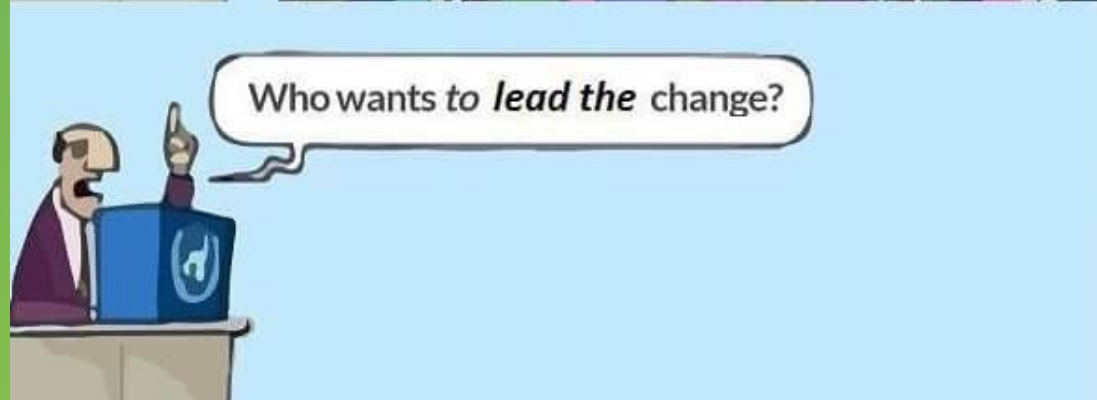


**People first.**

**Putnam County Department of Mental Health uses affirming language to promote the application of evidence-based and culturally-informed practices.**

THE Truth ABOUT  
**Cats & Dogs**







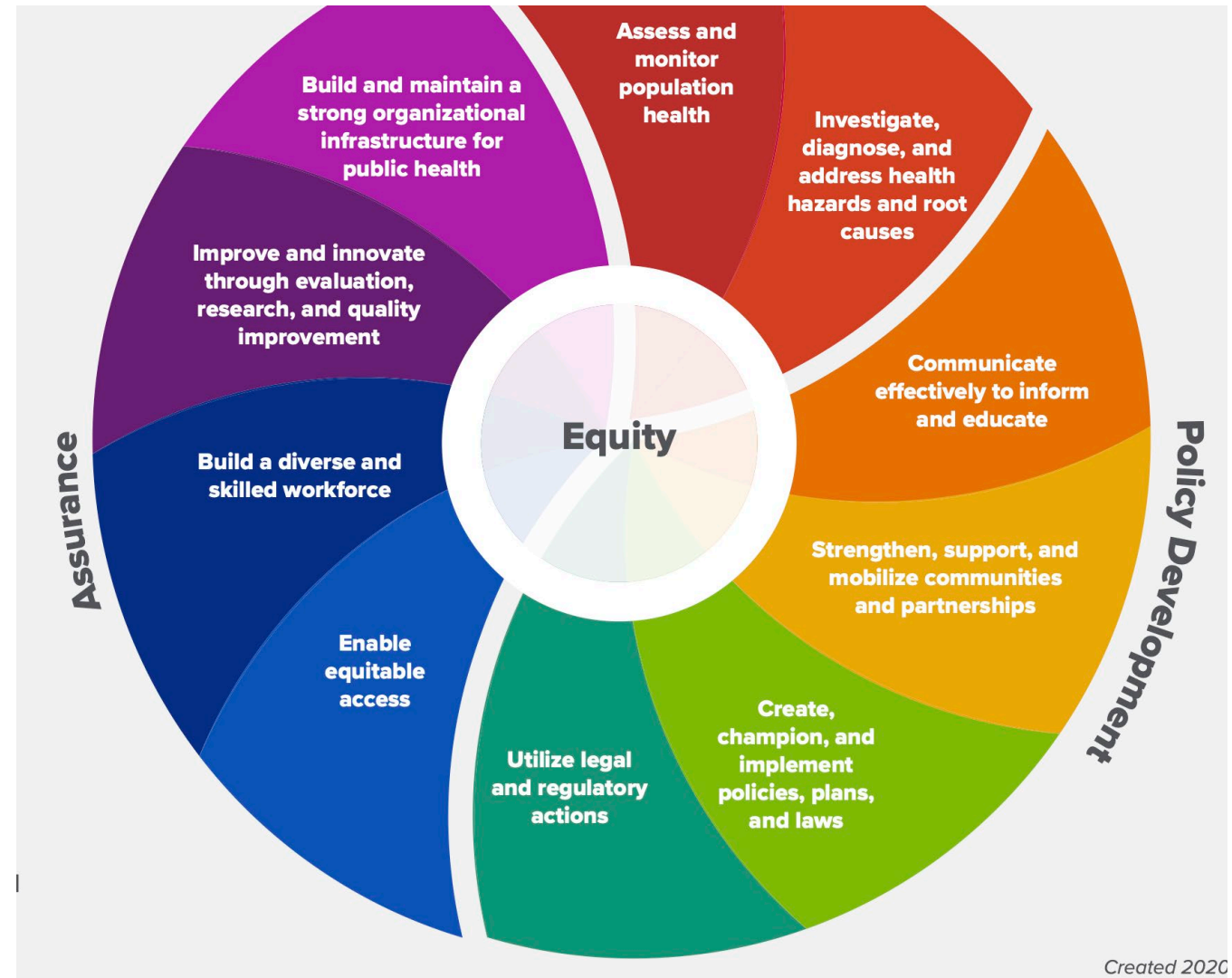
# What is Person-Centered Care

- Values empathy, respect, and shared decision-making.
- Collaborative approach involving patients and healthcare professionals
- Focuses on the individual, their unique needs, and preferences.
- Empowers patients to make informed decisions about their health.

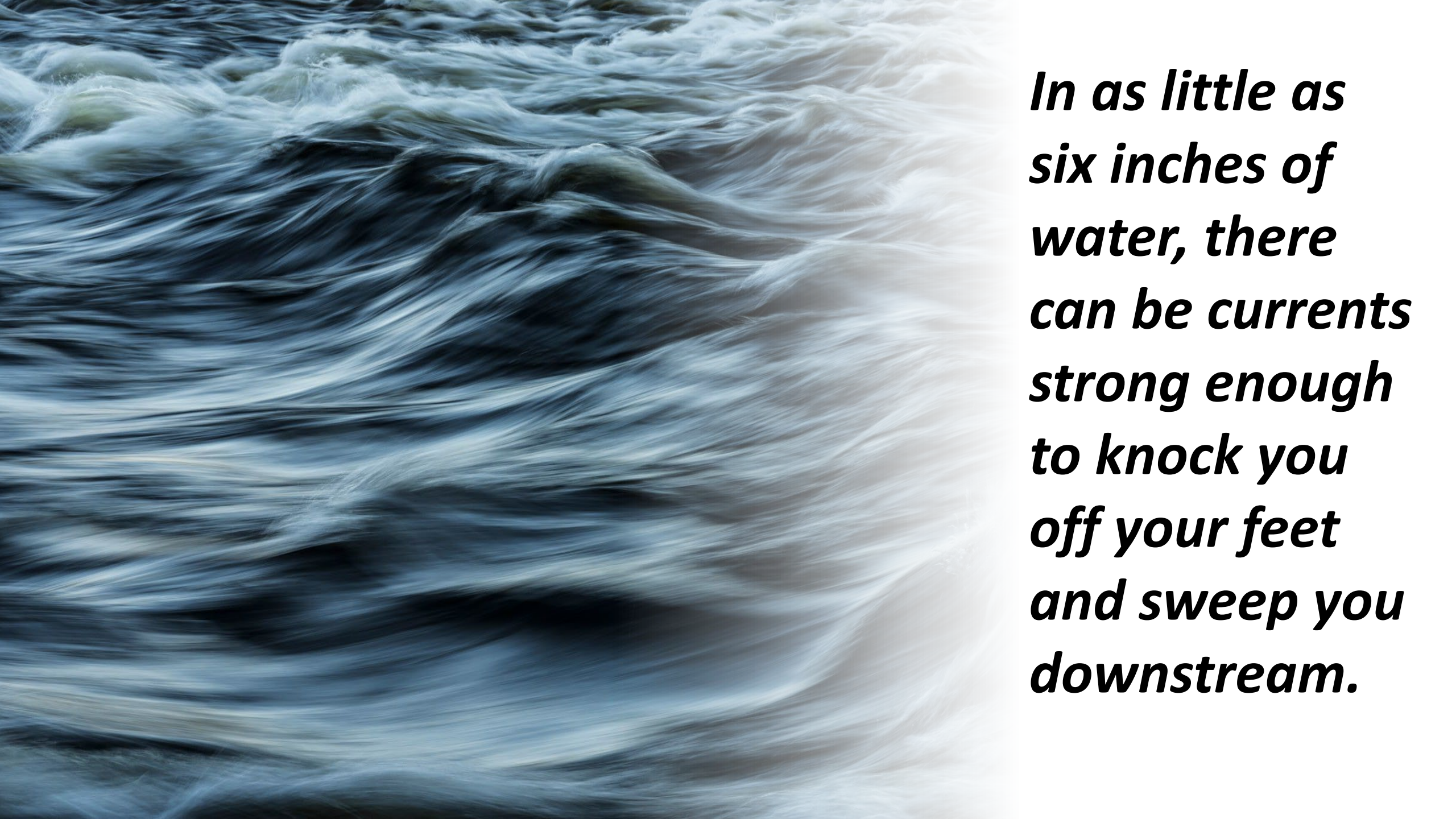


# What is Public Health's Role in Improving Behavioral Health Outcomes

What are some population health outcomes or initiatives related to behavioral health?







***In as little as six inches of water, there can be currents strong enough to knock you off your feet and sweep you downstream.***

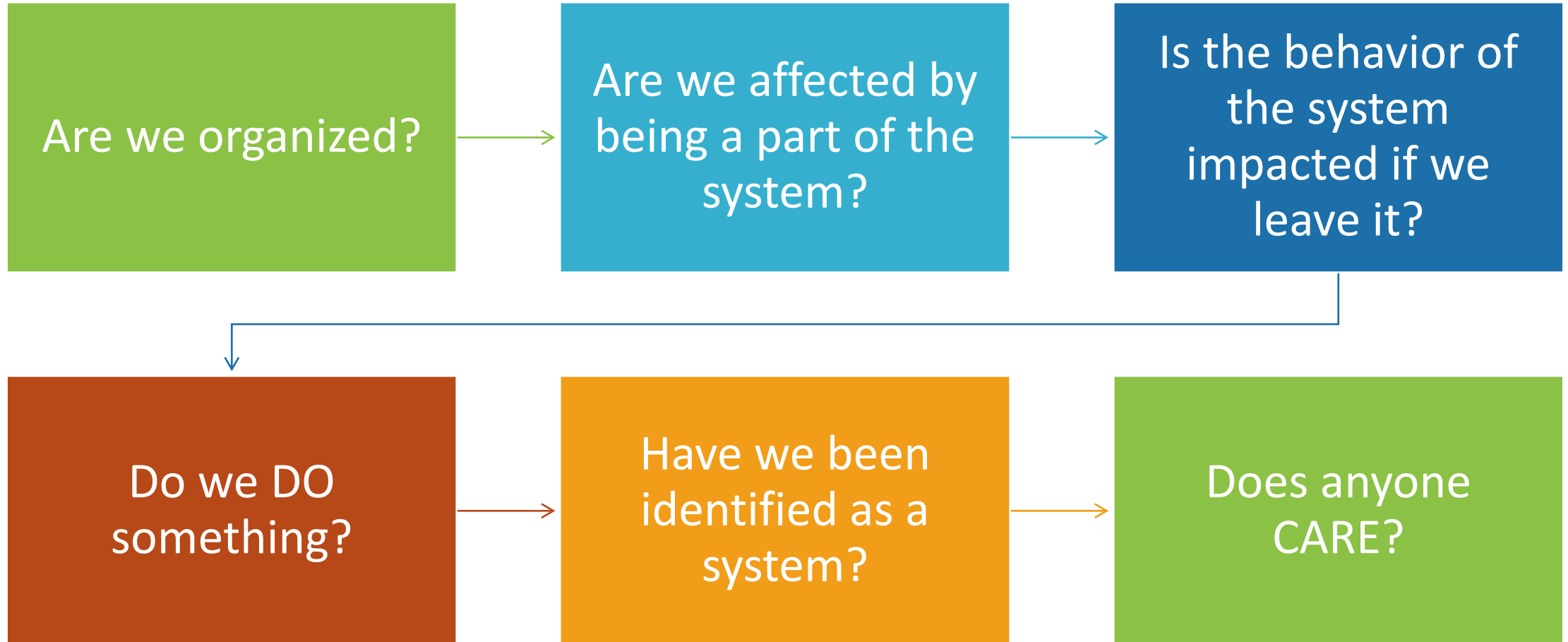
# What is a system?

- Made up of components connected together in an organized way
- The components are affected by the system and the system is changed if the components change or leave
- The organized assembly of components DOES SOMETHING
- Someone has identified this system and is interested in it.





# Are We Even a System?



# What Next?

---

A systems-approach to population health operates under the notion that community health improvement involves more than just stand-alone disease prevention and treatment programs.

# What Are Our Components?





# Using Data to Support Person-Centered Approaches

---

**44%**

Increase in overdose deaths for Black people in just one year.

**39%**

Increase in overdose deaths for American Indian and Alaska Native (AI/AN) people in just one year.

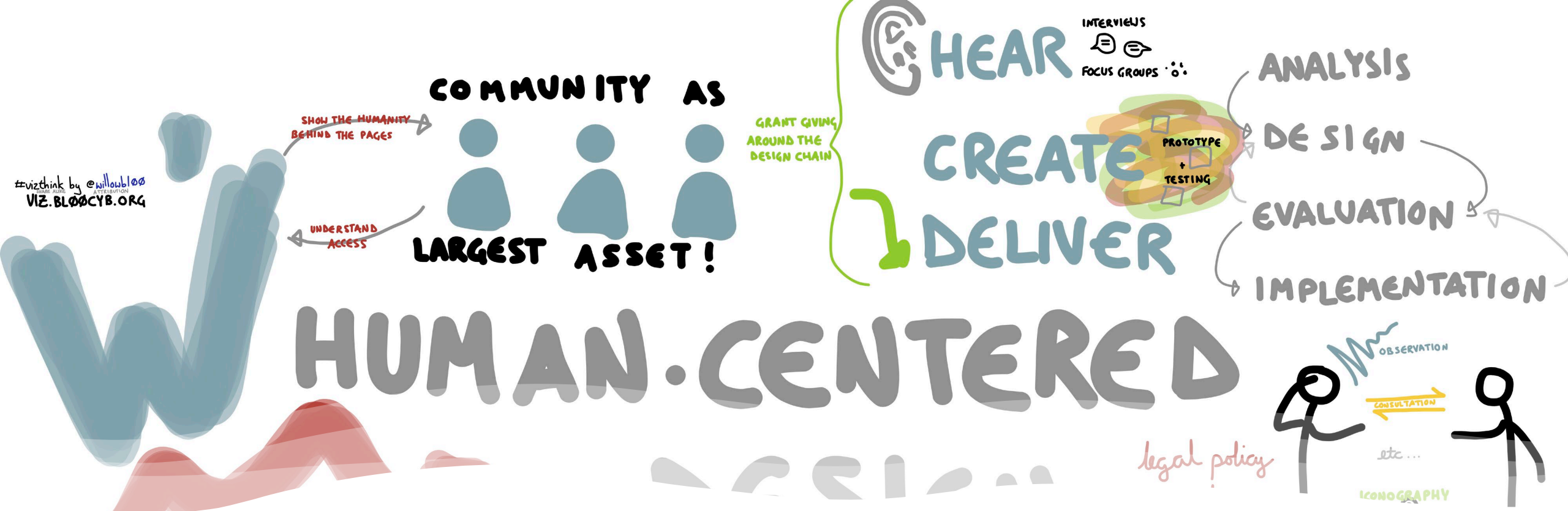
**2x**

In counties with more income inequality, overdose death rates for Black people were more than two times as high as in counties with less income inequality in 2020.

**1.8x**

People of low SES are 1.8 times more likely to report depression symptoms than those with higher SES.

**Most people who died by overdose had no evidence of substance use treatment before their deaths.**



What are we doing as a public health system to  
 meet the needs of the community as  
**defined by** the members of the community?

# What does it look like when the system works well?



## **Individualized care produces better population health outcomes**

Understand the need  
Improved adherence



## **Population health data informs person-centered care**

Identify high risk groups  
Optimizing care plans  
Making informed plans based on population level identified obstacles (i.e. language, transportation, access to childcare, etc.)



## **The Synergy**





# Thank You!

Shanna Siegel, RN, BSN

Putnam County Department of Health

[shanna.siegel@putnamcountyny.gov](mailto:shanna.siegel@putnamcountyny.gov)

Lauren Johnson, MA, CASAC-M

Putnam County Department of Mental Health

[lauren.johnson@putnamcountyny.gov](mailto:lauren.johnson@putnamcountyny.gov)

# 2024 Statewide Harm Reduction Symposium

*Empowering Communities for Change: Health, Equity, and Evidence*



**NEW YORK STATE ASSOCIATION  
OF COUNTY HEALTH OFFICIALS**

*Leading the Way to Healthier Communities*